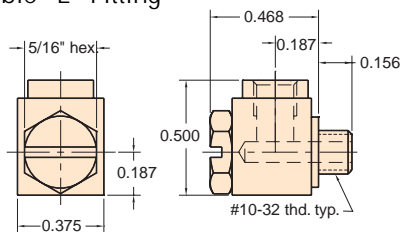


## 15002-1



Adjustable "L" Fitting



**Material:** Brass body, stainless steel stud

**Stud:** Stainless steel hex head with screwdriver slot (12292)

**Thread:** #10-32

**Seals:** Buna-N o-ring furnished

**Use:** Permits port to be aimed 360° in one plane, then secured by tightening screw. Also useful in connecting and disconnecting hose in hard-to-reach locations.

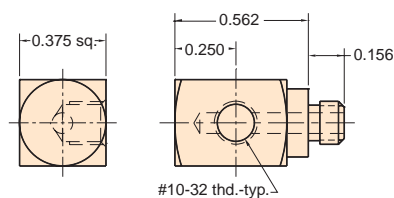
**Options:** (-NP)



## 15002-2



"L" Fitting



**Material:** Brass

**Thread:** #10-32

**Gasket:** Buna-N furnished in package only

**Use:** Allows ports to be brought out 90° to the side. For exact positioning use thread sealant

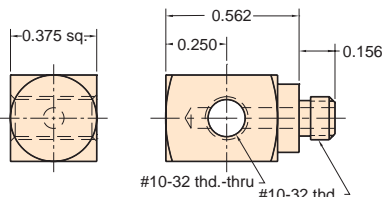
**Options:** (-NP)



## 15002-3



"T" Fitting



**Material:** Brass

**Thread:** #10-32

**Gasket:** Buna-N furnished in package only

**Use:** Like the "L" fitting, except ports out both sides. For precise positioning use thread sealant

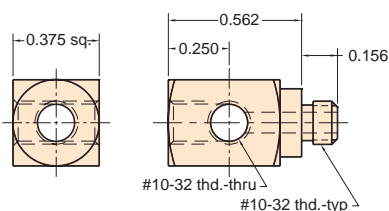
**Options:** (-NP)



## 15002-4



"X" Fitting



**Material:** Brass

**Thread:** #10-32

**Gasket:** Buna-N furnished in package only

**Use:** May be used as a miniature manifold, or "L" or "T" fitting by plugging unused ports with screw plug 11755. For precise positioning use thread sealant

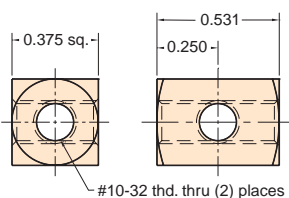
**Options:** (-NP)



## 15002-5



"X" Coupling



**Material:** Brass

**Thread:** #10-32

**Use:** Ideal as small manifold.

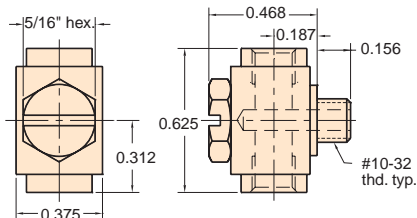
**Options:** (-NP)



## 15002-6



Adjustable "T" Fitting



**Material:** Brass

**Thread:** #10-32

**Stud:** Stainless steel hex head with screwdriver slot (12292)

**Seals:** Buna-N o-ring furnished

**Use:** Permits ports to be aimed in any direction 360° in one plane then secured by tightening screw. Also useful for connecting or disconnecting hose in tight spots.

**Note:** Same dimensions as 15002-1 "L" fitting, except length, which is 5/8"

**Options:** (-NP)

